

22ND ANNUAL REPORT TO THE COMMUNITY

# INVESTING IN OUR FUTURE



**EASTERN WEST VIRGINIA  
COMMUNITY FOUNDATION**

Gather. Grow. Grant.





## Greetings!

This, our 22nd Annual Report to the Community, focuses primarily on the financial nuts and bolts of the organization. By reading it, you can learn about our 18 new funds and the 150 grants we awarded; the \$2.5 million in gifts we received and the 405 donors who contributed them; and join us in celebrating the fact that we've recently topped \$20 million in total assets.

If you are interested in learning more, you can scan the QR codes to visit our website and read about the 220 component funds we manage and the scholarships and grants we award each year. We encourage you to visit our website at [www.EWVCF.org](http://www.EWVCF.org), subscribe to our eNews, follow us on Facebook, or simply pick up a copy of our printed newsletter that goes into great detail about our many programs.

Being able to award grants is, ultimately, the reason we exist. We GATHER funds from donors, GROW those gifts through prudent investing, then GRANT what has been earned to deserving nonprofit organizations, schools, and students. The grants and scholarships we award make a difference in the lives of many people here in the Eastern Panhandle.

The photo on the front cover is from our Mini-Grant to Teachers program. Widmyer Elementary kindergarten teacher, Rebecca Lindsay, applied for a \$487.08 mini-grant to purchase electronic tablets, keyboards, and headphones to help her students learn to read.

There was considerable discussion at the Grants Committee meeting regarding the use of electronic tablets by such young children and the committee decided to support the teacher's request and provide the funding. Ms. Lindsey sent us the photo and a great final report stating, "These devices made a tremendous improvement in reading for all kindergarten students in my class. Each has improved in their reading level and because of the additional practice 17/20 students now meet the targeted benchmark for the end of kindergarten."

We are Investing in Our Future by awarding grants to help 5-year-olds learn to read and by working with donors who want to leave a lasting legacy for their favorite charities. Teamwork, collaboration, synergy, Whatever you want to call it, the effort expended to make things better in Jefferson, Berkeley, Morgan, Hampshire, and Hardy counties comes back to us many times over. For that, we are grateful.

Regards,

President



Executive Director



**Our Mission** is to improve the quality of life for all people in Eastern West Virginia. The Community Foundation embraces the concept that people working together can make a difference. We seek a common philosophy whereby people recognize, understand, and act upon the benefits philanthropy brings to our community. We build permanent endowment, offer maximum flexibility to our donors, meet high professional standards, promote effective and efficient grantmaking, and strengthen charitable organizations in our community.

## Staff

Michael Whalton, Executive Director  
Amy Pancake, Affiliate Director  
Felicia Fuller, Finance and Admin Manager  
Karin Hammann Dunn, Program Manager

## EASTERN WEST VIRGINIA COMMUNITY FOUNDATION

Gather. Grow. Grant.

Exe229 E. Martin St., Suite 4  
Martinsburg, WV 25401  
304.264.0353



### EWVCF Board of Directors

Darlene Truman, President  
Lisa Welch, Vice President  
Bill White, Treasurer  
Charles "Chip" Hensell, Secretary  
Scott Roach, Past President  
Dan Anderson  
Beth Brent  
Michael Funkhouser  
Susan Caperton  
Chris Janelle  
George Karos  
Judi McIntyre  
Andrew McMillan  
Charlotte Norris  
Chris Palmer  
Ruth Pritchard  
Jan Wilkins  
David DeJarnett,  
Pro bono Legal Counsel



For Good. Forever.

P.O. Box 40  
Romney, WV 26757  
304.822.7200

### Hampshire Advisory Committee

Brian Hott, Chair  
Adam McKenery, Vice Chair  
Patty Austin, Secretary  
Amanda Giffin  
Denise Hott  
Milly Mullins  
Mary Sas  
David Waugerman

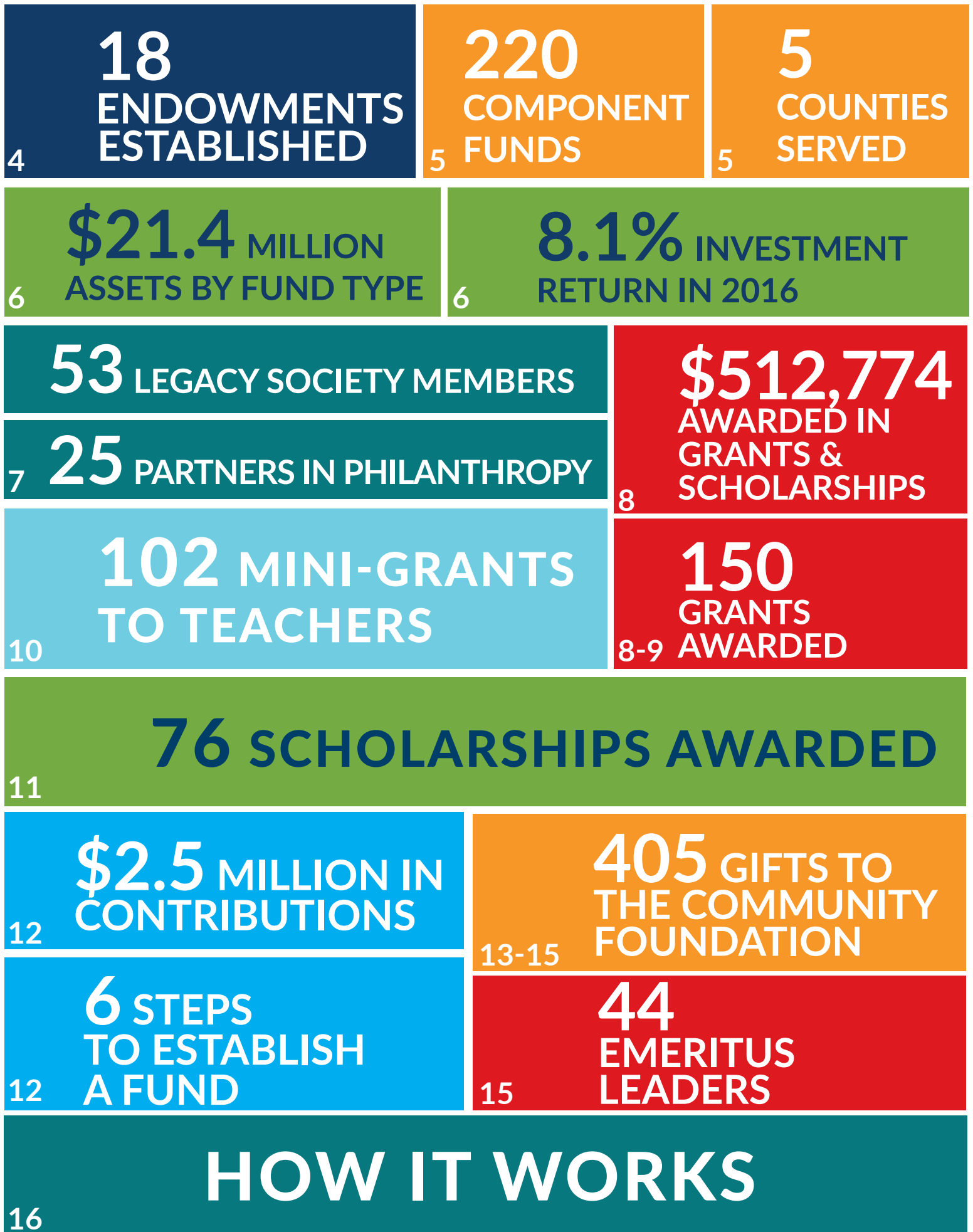


Connecting Caring People with Community Causes.

P.O. Box 1058  
Moorefield, WV 26836  
304.538.3431

### Hardy Advisory Committee

Michael Funkhouser, Chair  
Tracey Ratliff, Vice Chair  
Lucy West, Secretary  
Sheldon Arbaugh  
Oscar Bean  
Lora Foltz  
Michael McDonald  
Robert Taylor  
Tim Thorne  
Yvonne Williams  
Angie Zirk



# 18 ENDOWMENTS ESTABLISHED IN 2016

## AGENCY FUND

*Nonprofit organizations can establish an Agency Endowment at the Community Foundation. It's a simple and efficient way to build an endowment – and help create sustainability – for your nonprofit organization. The Community Foundation's experienced staff can also help your organization develop a campaign to build your endowment.*

**Our History, Our Community Fund** – The board of the Jefferson County Historic Landmarks Commission established this fund to support a grant program for stabilization and maintenance of historic structures, and for the purchase and maintenance of battlefield land in the unincorporated areas of Jefferson County. Investment returns will be added to the fund until it reaches \$100,000 in value.

## DESIGNATED FUNDS

*Establishing a Designated Fund allows you to support the good work of a specific nonprofit organization – a senior center, museum or virtually any nonprofit charitable organization. Because it's given through your Community Foundation, your gift provides the organization you select with funding and investment management services through the power of endowment.*

**John L. Burkett, III Memorial Fund** – Established in memory of John L. Burkett, III, by his parents, this designated fund provides annual support to the United Way of the Eastern Panhandle Strong Families Endowment Fund.

**Cool Spring Preserve Fund** – When the board of the local nonprofit organization Craftworks at Cool Spring, Inc. transferred ownership of Cool Spring Preserve to the Potomac Valley Audubon Society in late 2016 the decision was made to provide funding to help maintain the rare plants and hydrology in the marsh, encourage natural forest regeneration in the woodlands, and control invasive species throughout the property. Annual distributions from the Cool Spring Preserve Fund will help cover some of these costs.

**Goldie Gibbons Park Fund** – Established with a legacy gift from Virginia Gibbons, the fund will help Berkeley County Parks & Recreation build and maintain the Goldie Gibbons Park on the site of Ms. Gibbons's homestead in Bedington, West Virginia. The facility is being created as a "fun place for families and dogs."

**Katherine Burr Jackson Fund for the Peter Burr Farm** – John League established this fund to honor his Aunt Katherine, a direct descendant of Peter Burr, to support the Peter Burr Farm, a property owned and maintained by the Jefferson County Historic Landmarks Commission.

## FIELD OF INTEREST FUNDS

*By establishing a Field of Interest Fund, you can target your gift to address needs in an important and specific area of community life: Arts. Aging. At-risk youth. Historic Preservation. Conservation. You identify your personal interest area when making your gift; our board awards grants to community organizations and programs that are making a difference in the area you select. Your gift stays flexible enough to meet community needs in your interest area – even as they change over time.*

**Eastern Panhandle CARE Fund** – Established by the board of the Eastern Panhandle CARE Clinic, the primary intent of the fund is to provide distributions to support West Virginia-based 501(c)(3) nonprofit organizations that provide health care services similar to those that had been provided by the CARE Clinic.

**Eastern Panhandle Mini-Grants to Teachers Fund** – The Berkeley County Industrial Park Development Fund advisors established this fund as a challenge to match other donors and create a \$50,000 endowed fund to support the Mini-Grants to Teachers program in Jefferson, Berkeley, and Morgan counties.

**Arch Gleason Memorial Fund** – Arch Gleason was a highly respected CPA who worked for two decades in Martinsburg before entering government service, first as the director of the West Virginia Lottery, then as secretary of the West Virginia Department of Transportation. For the past 22 years, Arch served as president and CEO of the Kentucky Lottery Corporation. When he passed away in July 2016, friends in the Eastern Panhandle established this fund to support programs that provide services to individuals with learning disabilities, special needs, autism, or similar challenges.

## DONOR ADVISED FUNDS

*A Donor Advised Fund allows you to make a gift to the Community Foundation and remain actively involved in suggesting uses for your gift. You can work with the Community Foundation staff to suggest ongoing uses for the fund – targeting the issues you care about most. Grant awards are issued to charities in the name of the fund (or anonymously if you prefer). It's a simple, powerful and highly personal approach to giving.*

**Hardy County Community Foundation Heritage Fund** – This fund was established to provide financial support to nonprofit organizations dedicated to preserving the heritage of the region.

**Palmer Family Fund** – Established by Mark and Sue Ann Palmer and their son Chris and his wife Trish, this fund will primarily support West Virginia-based nonprofit organizations.

**Fleming Family Fund** – Established with a generous contribution from Pat and Leigh Fleming, this fund supports Eastern Panhandle nonprofit organizations and other charitable programs.

## SCHOLARSHIP FUNDS

*In creating a scholarship, you invest in your community's future and show students you care. Your Community Foundation provides the expertise to help you meet your personal goals and awards scholarships to deserving students. Your gift can help students – from preschool to postgraduate – achieve their lifetime dreams.*

**The Inspiration Scholarship Fund** – Martinsburg native and nationally recognized motivational speaker Kristi Hedges established this scholarship fund in memory of Thelma Henry and Viola Hedges. High achieving, first in their family students from public schools in Jefferson, Berkeley, or Morgan counties who are planning on attending an out-of-state college or university may apply.

**R.L. Johnson, Jr. Scholarship Fund** – Established by his parents, this fund memorializes the life R.L. and his passion for basketball. Graduating seniors from Hampshire County who've played basketball during all four years of high school and demonstrate outstanding dedication to the sport and the team will benefit from this scholarship.

**Paul Ropp Memorial Scholarship Fund** – BB&T Wealth, trustee of the W. Paul Ropp Memorial Trust, established this fund at the Community Foundation to provide an annual scholarship to a deserving Martinsburg High School student. Mr. Ropp had directed that special consideration be given to a student who would be attending West Virginia University with the intent to major in a scientific field of study.

**South Jefferson Ruritan Club Scholarship Fund** – Established by the members of Jefferson County's oldest Ruritan Club, this fund provides renewable scholarships to support students from Jefferson County who are working toward a degree with a focus on agriculture or veterinary science.

**Fulton L. Walker, Jr. Scholarship Fund** – Family members and friends of Fulton L. Walker, Jr. established this fund in his memory to honor his achievements on and off the football field and to help a Martinsburg High student with proven financial need attend West Virginia University. To help build the endowment, supporters of the scholarship are organizing a golf tournament and several other fundraising activities.

**West Virginia Wing – Civil Air Patrol Cadet Scholarship Fund** – Martinsburg native Dennis D. Barron established this fund to provide scholarship assistance to members of the Civil Air Patrol Cadet Program in West Virginia. Priority will be given to Civil Air Patrol Cadets from the Martinsburg Squadron who are unlikely to receive the West Virginia Promise or other scholarships.

## UNRESTRICTED FUND

*When you establish an Unrestricted Fund, your gift can address a broad range of local needs – including future needs that often cannot be anticipated at the time your gift is made. We evaluate all aspects of community well-being: arts and culture, economic development, education, environment, health and human services, neighborhood revitalization and more. The flexibility of your unrestricted gift enables your Community Foundation's program experts to respond to the community's most pressing needs, today and tomorrow.*

**Morgan County Community Impact Fund** – This fund awards grants to support Morgan County West Virginia-based 501(c)(3) nonprofit organizations, churches, schools and government agencies that primarily serve distressed communities or economically disadvantaged individuals and families.

# 220 COMPONENT FUNDS

*The Eastern West Virginia Community Foundation currently manages 220 endowed funds. In 2016, donors established 18 new funds to serve their communities in a wide variety of ways, from scholarships to donor advised funds. More in-depth descriptions of all 220 EWVCF funds can be found on our web site.*

The Eastern West Virginia Community Foundation (EWVCF) has grown exponentially during the past several years and now holds 220 component funds with more than \$21 million in assets.

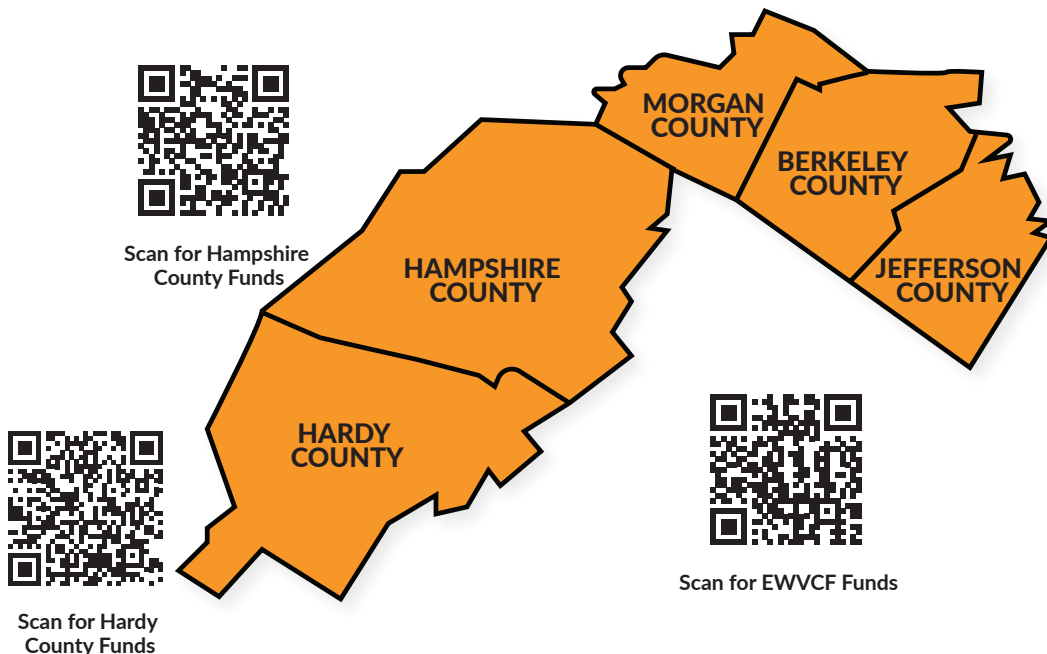
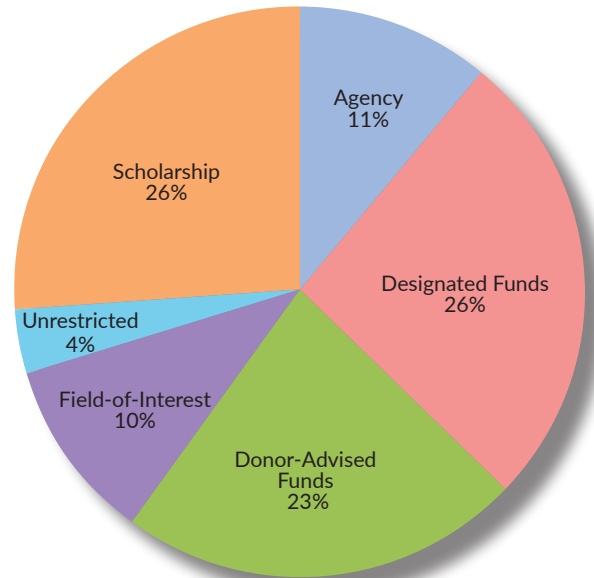
We have 57 Designated Funds, 57 Scholarship Funds, 50 Donor Advised Funds, 25 Agency Funds, 23 Field of Interest Funds and 8 Unrestricted Funds. These range from small start-up seed funds with just \$1,000 to funds of more than \$1 million.

## 5 COUNTIES SERVED

EWVCF proudly serves five counties of the Eastern Panhandle. Since 1995, Jefferson, Berkeley, and Morgan counties have been represented under the Eastern West Virginia Community Foundation banner. In 2006, we established our affiliate in Hampshire County, and in 2007, the Hardy County affiliate was added.

Our EWVCF Board of Directors oversees all operations, and the two affiliates are semi-autonomous with advisory boards for each. Information about all of the component funds can be found by navigating from the homepage of our website: [www.EWVCF.org](http://www.EWVCF.org) or by scanning the QR codes below. Funds that specifically benefit the affiliates are featured on the affiliate pages.

### COMPONENT FUNDS



West Virginia, like the rest of the country, is in the midst of the biggest personal wealth transfer in history. The five counties served by the Community Foundation, **Jefferson, Berkeley, Morgan, Hampshire and Hardy** have more than \$20 billion in personal wealth today and more than \$5.2 billion will be transferred to the next generation during the coming 10 years.

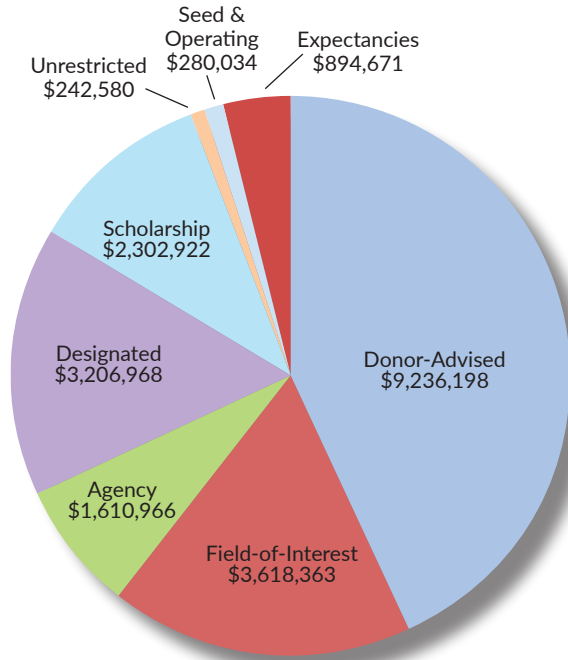
If 5 percent of that wealth is set aside for community philanthropy, the Community Foundation will grow to more than \$260 million and will be able to award nearly \$13 million in grants to local charities every year.

Although this is a lofty goal, other areas of the country have had great success with similar programs. Considering how generous West Virginians are, we believe we can help donors create lasting legacies that will benefit the Eastern Panhandle for generations to come.



# \$21.4 MILLION ASSETS BY FUND TYPE

## ASSETS BY FUND TYPE - 2016



Community Foundations help donors support favorite charitable causes and nonprofit organizations by creating permanent endowments that will last forever. Whatever your passion — be your alma mater, a local theatre or arts organization, daycare or recreation center, historical society or social services, education or recreation, youth or senior citizen program — a gift to the Community Foundation can make your generosity go on in perpetuity. By establishing an endowed fund or adding to an existing one, donors can continue a tradition of giving long after they are gone.

The power of compounding helps this organization thrive. We focus on long-term growth and award grants to charities from a portion of the investment gains. In 2016, with assets of just over \$21.4 million, we awarded \$512,774 in grants and scholarships, and in 2017 we expect to award over \$1.5 million.

To support the operations of the Community Foundation, each endowed fund is charged 1% annually (new scholarship funds are assessed a 2% fee because of the complexity of scholarships). These fees cover approximately 60% of our annual expenses. Additional operating income is derived from our Partners in Philanthropy program along with contributions from several generous individuals.

## 2016 Summary Financial Statement

The Eastern West Virginia Community Foundation's auditor, Yount Hyde & Barbour, PC, has issued a clean opinion on the financial statements ended December 31, 2016. You are welcome to download our 2016 audited financial statements and IRS Form 990 from our Website at [www.EWVCF.org](http://www.EWVCF.org)



Scan this QR Code to  
download our 2016  
IRS Form 990



Scan this QR Code to  
download our 2016  
Financial Report/Audit

# 8.1% INVESTMENT RETURN IN 2016

The Community Foundation enjoyed 8.1% return on investments in 2016. Assets held by the Eastern West Virginia Community Foundation for five years earned a 7.6% rate of return, and over seven years returns averaged 7.5%. EWVCF has a very active Investment Committee that meets quarterly to analyze investment performance, hear from our advisors, and review policies and procedures to assure best practices.

Special Thanks to our Investment Advisors for providing outstanding services at a greatly reduced fee of 35 basis points — just over 1/3 of one percent annually.

Bert McEldowney and Susan Cassidy of  
**BB&T Retirement and Institutional Services**

Leslie Crabill of **BCT—Bank of Charles Town**

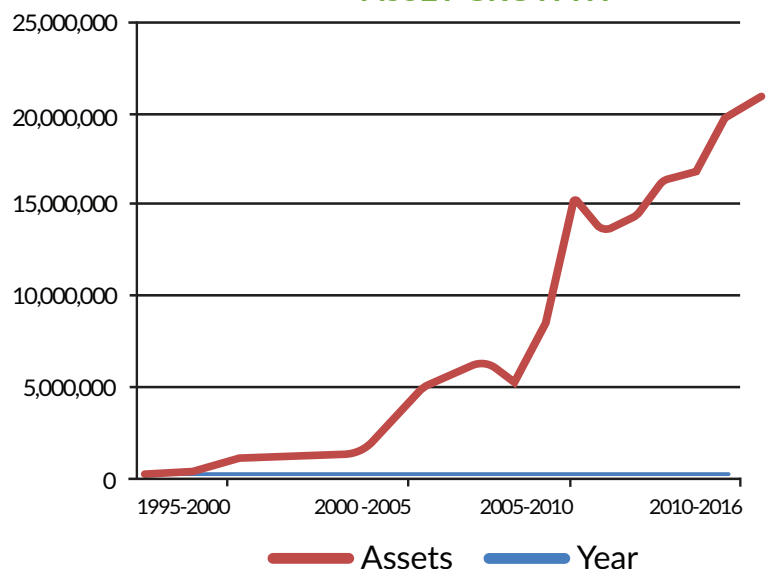
Keith Unger and James "Rusty" Hudnall of  
**City National Bank**

Tom Peterson and Chenoa Everett of **CNB Bank**

Matt Kradel and Scott Rush of  
**First United Bank & Trust**

Ned Worthington and Matthew Humphrey of  
**United Wealth Management.**

## ASSET GROWTH





# 53 LEGACY SOCIETY MEMBERS

Legacy Society members are creating charitable endowments tomorrow by making planned gifts today. Recording one's charitable intentions also serves as a guidepost for family and friends, thereby establishing a simple way for loved ones to support nonprofit organizations and charitable causes which are near and dear to you.

There are various ways to make a planned gift, and we hope you will involve the Foundation in your gift before you make it. A planned gift is an extraordinary way to leave a lasting legacy to honor you, your family and your community. Often, the Community Foundation will not receive your planned gift for years to come, but we are here to help you plan for the future.

We encourage you to include your attorney, estate planner, and financial advisor in the discussion as you develop your gift plans. It's the best way to make certain your charitable vision is crystal clear, ensure the tax deductibility of your gift, and build your legacy. For more information and sample wording to help craft a legacy gift within your estate plan, download our EWVCF Bequest Wording document which will provide ideas that can help your attorney, CPA, or financial advisor.



Legacy Society donors have remembered the Community Foundation in their will or another form of planned gift. Please consider adding your name to this group by becoming a member of our Legacy Society today.

To discuss creating your personal legacy, please call the Community Foundation.

# 25 PARTNERS IN PHILANTHROPY

The Eastern West Virginia Community Foundation enjoys the support of many businesses in the area. Our Partners in Philanthropy contribute amounts ranging from a few hundred dollars to \$3,500 per year and these funds pay for the Scholars & Donors Reception where we recognize area students who are receiving scholarships, our Mini-Grants to Teachers Reception in the fall, and the late summer Emeritus and Nonprofit Leaders Luncheon.

Our Partners in Philanthropy also fund challenge grants to help build the endowments of local nonprofit agencies, Community Workshops & Nonprofit Training programs, and new unrestricted county-based Community Funds.

Total contributions from our Partners in Philanthropy amount to more than \$40,000 annually and these funds are vital to the success of our many community outreach programs.

## Cornerstone Sponsors

**JEFFERSON**  
DISTRIBUTING



WEALTH

**Bowles Rice**  
ATTORNEYS AT LAW



**First United**  
Bank & Trust

**ROCS**  
LOCAL MARKET



**UNITED**  
BANK

**CNB**  
Bank, Inc.

**BCT Bank of Charles Town • Dan Ryan Builders**  
**City National Bank • Gat Creek Furniture**

## Hampshire Affiliate Partners in Philanthropy

### Cornerstone

Bank of Romney  
Northern Eagle Inc.  
Valley Health

### Gold

FNB Bank  
SJ Morse

## Hardy Affiliate Partners in Philanthropy

### Cornerstone

Northern Eagle Inc.  
Summit Community Bank

### Platinum

Capon Valley Bank  
Foltz Litter, Inc.  
Pendleton Community Bank

### Gold

The Grant County Bank  
Hawse Shop n Save  
Thorne & Keplinger

Dennis D. Barron  
Helen Jackson Bowser  
Walter and Mary Jo Ziler Brown  
Robert Burke  
John and Jacqueline Burkett  
Linda Case  
David and Dana DeJarnett  
Jerry L. Derflinger  
Richard S. Durham  
Solomon Fine  
Frank C. Fischer  
G. Scott Funkhouser  
Virginia L. Gibbons  
Conrad C. and MaryAnn Hammann  
Eleanor Heishman  
Ruth Heishman  
Fred and Denise Hollida  
John and Eleanor Houyoux  
Floyd E. Jacques  
George Karos  
James E. Keel  
J. Philip and Doris L. Kesecker  
Frank and Kitty Koepping  
Tia McMillan  
Arthur H. Miller  
C. David and Barbara L. Miller  
Nancy E. Needy  
M. Elizabeth Oates  
Don and Amy Owen  
Robert Owens  
Buzz and Lisa Poland  
Beth Raps, PhD  
Frederick B. Rice  
Lacy and Linda Rice  
Doug and Joan Roach  
Scott and Linda Roach  
Steven M. and Tina F. Roach  
Jennifer Roberts  
Paul Ropp  
Dan and Edith Sampson  
Myrtle J. Schneiderhan  
Elizabeth Shade  
Lester A. and Janet I. Smith  
Jane P. Snyder  
William L. and Bonnie M. Stubblefield  
Michael Barry Tallent  
Brian and Darlene Truman  
Paul and Lisa Welch  
Michael and Susan Hawken Whalton  
John S. Wharton  
Helen Mae Wolford  
Gretchen Wurzburg  
Robert B. Yoe



304-264-0353



www.ewvcf.org

# \$512,774 AWARDED IN GRANTS & SCHOLARSHIPS

A total of 150 grants and 76 scholarships were awarded by the Community Foundation in 2016. Funding for grants and scholarships comes from a wide range of programs including annual contributions, fund distributions, and legacy gifts. We thank all our donors who help us year after year as we provide vitally important funding to dozens of partner nonprofit organizations that serve the community.

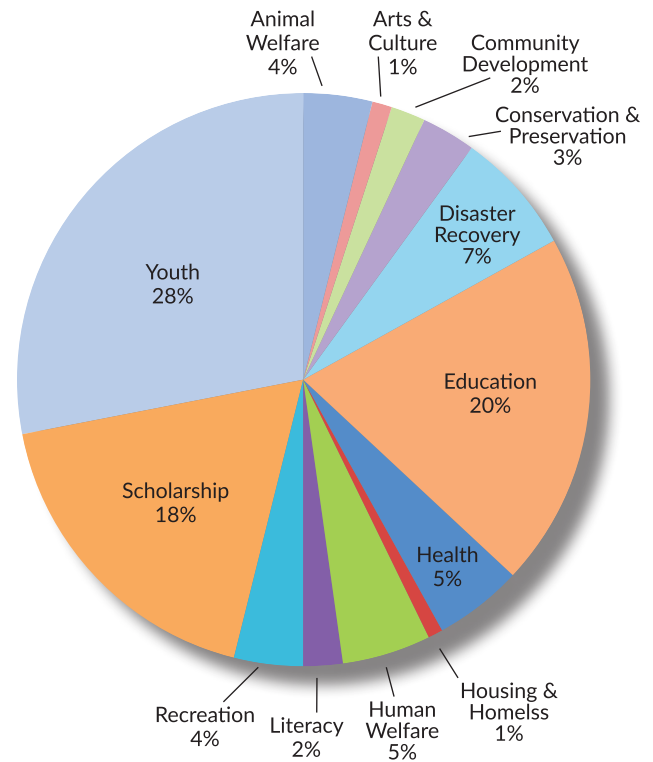
The following grants were awarded by the Eastern West Virginia Community Foundation or one of our affiliates in 2016.



Amazing Grace Baptist Church	\$565.00	Capon Springs Fire Dept.
American Cancer Society	\$1,500.00	Capon Valley
Animal Welfare Society of Jefferson Co		Neighbor to Neighbor
\$13,000.00		CASA of the
Augusta Elementary School	\$870.00	Eastern Panhandle, Inc.
Augusta Volunteer Rescue Squad	\$200.00	Catholic Charities of
Back Creek Valley Elementary School	\$594.00	West Virginia-EP
BE-Hive,		Charles Town Middle School
A Family Inspiration Place, Inc	\$5,000.00	
Beckley Area Foundation	\$700.00	
Bedington Elementary School	\$2,448.00	
Berkeley Arts Council, Inc.	\$713.00	
Berkeley County		
BackPack Program, Inc.	\$3,000.00	
Berkeley County Humane Society	\$3,000.00	
Berkeley County Meals on Wheels	\$1,000.00	
Berkeley County Schools	\$2,500.00	Children First Child
Berkeley County Special Olympics	\$700.00	Development Center
Berkeley Springs High School	\$252.00	Children's Home
Bethany Christian Services	\$1,000.00	Society of West Virginia
Birthright of Charles Town	\$250.00	City of Romney
Blue Ridge Elementary	\$500.00	Community Alternatives
Boys & Girls Club of the Eastern Panhandle	\$10,500.00	to Violence, Inc.
Burke Street Elementary School	\$4,289.00	Community Catalyst, Inc
C.W. Shipley Elementary School	\$1,208.00	Community Combined Ministries
Camp Frame 4-H Association	\$23,000.00	/Kidz Power Pacs
Capon Bridge Middle School	\$250.00	Community Fellowship Church
		Community Networks, Inc.

**150 Grants  
Awarded in  
2016**

## 2016 GRANTS BY PROGRAM



\$200.00	Contemporary American	
	Theatre Festival	\$1,500.00
\$250.00	Days End Farm Horse Rescue, Inc	\$500.00
	Driscwood Elementary School	\$1,000.00
\$3,000.00	Eagle Gridiron Gang Supporters	\$4,400.00
	Eagle School Intermediate	\$500.00
\$6,000.00	East Hardy Early Middle School	\$21,231.00
\$1,000.00	East Hardy High School	\$21,231.00
	Eastern Panhandle CARE Clinic	\$1,200.00
	Eastern Panhandle Young Life	\$2,300.00
	Eastern Regional Family	
	Resource Network	\$250.00
	Eastridge Health Systems	\$2,500.00
	Edge Hill Cemetery	\$5,000.00
	Faith Christian Academy	\$500.00
	For the kids, By George	
	Children's Museum	\$500.00
	Girl Scouts Council of	
\$500.00	the Nations Capital	\$3,600.00
	Good Samaritan Free Clinic	\$15,000.00
\$3,000.00	Good Shepherd Interfaith	
\$125.00	Volunteer Caregivers	\$3,300.00
	Habitat for Humanity	
\$1,500.00	Eastern Panhandle	\$300.00
\$6,000.00	Hampshire High School	\$1,119.00
	Harpers Ferry Middle School	\$475.00
\$3,000.00	Hedgesville Elementary School	\$1,184.00
\$565.00	Hedgesville High School	\$6,807.00
\$5,300.00	Hedgesville Hounds	\$500.00



Hedgesville Little League	\$1,000.00
Hedgesville Middle School	\$1,221.00
Historic Shepherdstown	
Commission	\$2,500.00
Horses with Hearts, Inc	\$2,500.00
Hospice of the Panhandle	\$4,075.00
Inwood Primary	\$500.00
James Rumsey Technical Institute	\$964.00
Jefferson County 4-H Foundation	\$7,000.00
Jefferson County Board of Education	\$850.00
Jefferson County	
Community Ministries	\$750.00
Jefferson County Historic	
Landmarks Commission	\$4,500.00
Jefferson High School	\$1,000.00
Junior Mentoring Programs	
(JUMP)	\$9,900.00
Land Trust of the	
Eastern Panhandle, Inc.	\$100.00
Marine Toys for Tots	\$1,000.00
Martinsburg High School	\$950.00
Martinsburg High School Bulldogs	
Football Boosters	\$10,000.00
Martinsburg North Middle School	\$2,500.00
Martinsburg Police & Fire	
Explorers Post 27	\$5,000.00
Martinsburg South Middle School	\$3,539.00
Martinsburg Union Rescue Mission	\$3,600.00
Martinsburg-Berkeley County	
Parks & Recreation	\$20,525.00
Martinsburg-Berkeley County	
Public Libraries	\$4,850.00
Mathias Civic Center	\$300.00
Mill Creek Intermediate School	\$320.00
Moorefield High School	\$1,000.00
Moorefield Intermediate School	\$1,000.00
Morgan Arts Council	\$3,000.00
Morgan County Association	
for Food and Farms	\$2,500.00
Morgan County Partnership	\$2,000.00
Morgan County Starting Points	\$5,550.00
Mountain Heart Foundation	\$250.00
Mountain Ridge Intermediate School	\$192.00
Mountain Ridge Middle School	\$3,500.00



Mt. Zion United Methodist Church	\$3,000.00
Musselman Middle School	\$260.00
Nicholas County	
Community Foundation	\$8,644.00
Norborne Preschool and	
Day Care Center	\$5,000.00
North Jefferson Elementary School	\$500.00
Old Charles Town Library	\$600.00
Opequon Elementary	\$576.00
Otterbein United Methodist Church	\$100.00
Partnership for Affordable Housing	\$250.00
Paw Paw Elementary School	\$200.00
Pleasant View Elementary School	\$1,000.00
Potomac Riverkeeper Network	\$1,300.00
Potomac Valley Audubon Society	\$4,000.00
Potomack Intermediate School	\$643.00
Reach Out Rescue and Resources	\$1,000.00
Relatives As Parents Program of the	
Panhandle, Inc.	\$1,000.00
Romney Elementary School	\$1,449.00
Romney First United	
Methodist Church	\$815.00



Romney Middle School	\$1,120.00
Romney Rescue Squad	\$200.00
Rosemont Elementary School	\$1,000.00
Saint Joseph Parish School	\$500.00
Salvation Army	\$3,600.00
Shenandoah Area	
Council-Boy Scouts	\$3,600.00
Shenandoah Women's Center	\$3,600.00
Shepherdstown Day Care, Inc	\$1,400.00
Shepherdstown Elementary School	\$1,340.00
Shepherdstown Middle School	\$2,312.00
Shepherdstown Public Library	\$5,000.00
Slanesville Elementary School	\$465.00
Slanesville Volunteer	
Fire and Rescue Co	\$200.00
South Berkeley Volunteer	
Fire Company	\$1,000.00
South Jefferson Elementary School	\$500.00
Spring Mills High School	\$3,709.00
Spring Mills Middle School	\$2,141.00



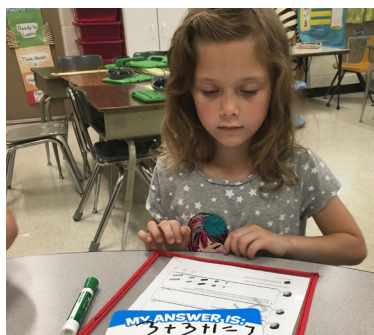
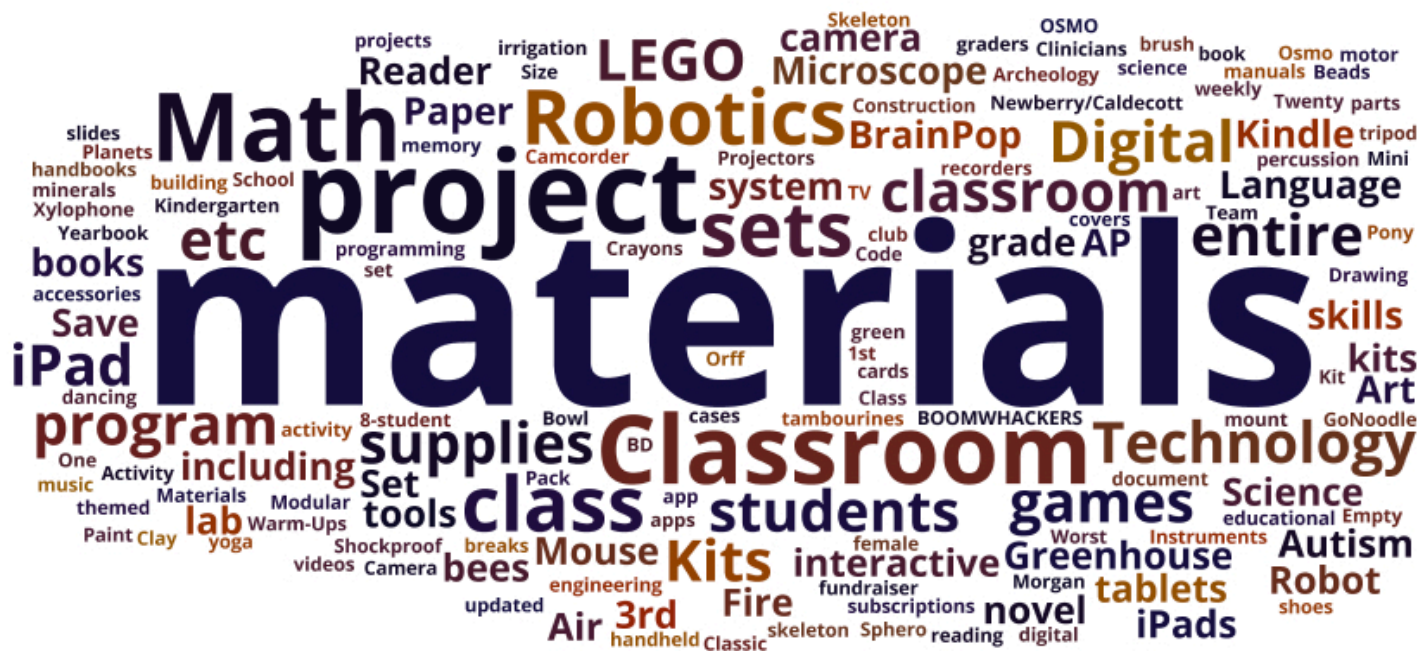
Spring Mills Primary School	\$1,978.00
Springfield Area Rescue Squad	\$200.00
Springfield-Green Spring	
Elementary School	\$250.00
T.A. Lowery Elementary	\$500.00
Tomahawk Intermediate School	\$1,236.00
Town of Wardensville	\$3,850.00
Trinity Episcopal Church	\$3,100.00
United Way of the	
Eastern Panhandle	\$900.00
Valley View Elementary School	\$430.00
Vh1 Save the Music Foundation	\$4,000.00
Wardensville Lions Club	\$1,000.00
Warm Springs Intermediate School	\$1,562.00
Warm Springs Middle School	\$1,500.00
Washington County	
Museum of Fine Arts	\$1,500.00
Washington High School	\$500.00
West Virginia Schools for	
the Deaf & Blind	\$234.00
West Virginia VOAD	\$25,933.00
Widmyer Elementary School	\$487.00
Wildwood Middle School	\$1,280.00
Winchester Avenue	
Elementary School	\$275.00
Wind Dance Farm &	
Earth Education Center	\$850.00



Excellence. Accountability. Impact.™



# 102 MINI-GRANTS TO TEACHERS



*"An investment in knowledge pays the best interest."*

## -Benjamin Franklin





64 students received a total of \$96,250 in scholarships from the Community Foundation in 2016. Awards ranged from a single \$100 award to "a fifth grade student at Warm Springs Middle School for positive change in behavior" to a number of \$5,000 scholarships from the Floyd and Isabel Jacques Scholarship Fund for top achieving students from Musselman High School.

Whitney Adams	Jordan Hardiman	Alyssa Paul
Natalie Adams	Keara Heck	Maerin Phillips
Sophia Bakar	Isaac Heironimus	Rachel Piepenbrink
Jordan Beer	Madison Hinkle	Raven Powers
Dana Bishop	Violet Hott	Tyler Richards
Britlee Brock	Dimitri Hunter	Zachary Salman
Jade Burton	Madison Isenberg	Anna Samandasuk
Miranda Clark	Emily Ivanescu	Michaela Sencindiver
Andrea Compton	Alize Johnson	Kallie Shaffer
Sardana Coyle	Claire Linton	Taylor Shrewsbury
Zachary Crooms	Nicolas Lopez	Sabrina Shroades
Carter Davis	Elizabeth Lynch	Raeshean Simmons
Miguel Diaz	Paige Mendzela	Seth Smith
Lindsay Dodds	Samantha Mudge	Taylor Stocks
Kiona Dokes	Michaela Munson	Rachel Stottlemeyer
Juan Doza	Gerrit Myers	Airtica Thomas
Blair East	Travis Nupp	Brooke Thomson
Ayana Feliciano	Jillian O'Connell	Morgan Triggs
Sarah Fizer	Juliana O'Reilly	Jacob Vanorsdale
Sabrina Foxx	Christiana Otto	Rebecca Whetzel
Caroline Fresch		Morgan Wilkins
Carlee Gagliardo		Tiffany Youngblood

# SCHOLARSHIPS AWARDED





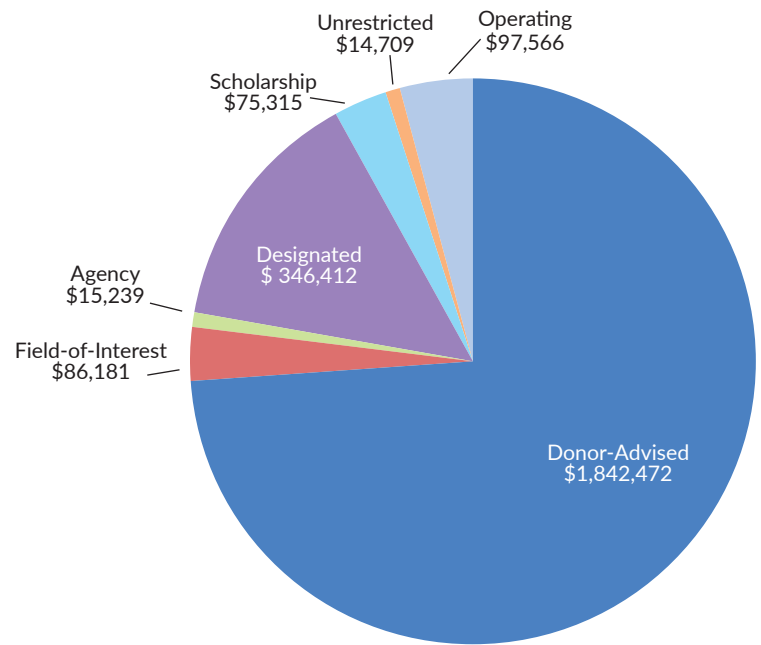
# \$2.5 MILLION IN CONTRIBUTIONS

In 2016, the Community Foundation was fortunate to receive a near-record number of contributions. Some gifts were as small as \$5, while one was actually a check for \$1,000,000. We received contributions from individuals, estates, and nonprofit organizations.

Donors established new funds, contributed to existing ones, made pass-through grants to favorite charities, and supported the West Virginia Neighborhood Investment Program. Others sent gifts in memory of a beloved family member or friend, or in honor of someone's accomplishment.

We received donations of cash, checks, stocks, mutual funds, and more than a few charitable contributions from Traditional IRAs. Working with the Community Foundation, donors are able to split a gift among several funds, thereby supporting a number of favorite charities. By the end of the year, a total of more than \$2.5 million was received.

Contribution by fund type - 2016



## 6 STEPS TO ESTABLISH A FUND

Creating a fund in your Community Foundation is economical and easy. Donors receive prudent fund management, generous tax advantages, and access to a committed staff with knowledge of the community and the charities in our area. We handle administrative responsibilities, file necessary tax returns, evaluate charities, and monitor changes in the community to help you achieve your charitable vision. A wide variety of endowed funds can be created with a lump-sum gift of as little as \$5,000. Here are the basic steps for creating a fund.

### 1. Define your charitable and financial objectives.

Consider how you want your gift to be used and how much you and other family members would like to be involved in making grant recommendations. You may have a favorite charity you want to support, or be passionate about youth and education programs, or want to provide scholarships to area students.

### 2. Select the type of fund that matches your charitable interests.

*Agency Fund • Designated Fund • Donor Advised Fund • Field of Interest Fund • Scholarship Fund • Unrestricted Fund*

**3. Determine which asset you will use in creating your fund.** Gifts of cash, securities (publicly traded or closely held), personal property, or real estate can be accepted by the Community Foundation to set up a fund. Assets with a low cost basis are often wise choices, since they offer maximum tax advantages: You pay no capital gains tax and receive a favorable income-tax deduction. You may also wish to review assets inside your retirement plan for possible charitable use.

At all times, we work closely with your accountant and attorney to ensure your charitable wishes are clearly understood and applied.

**4. Choose a name for your fund.** Many donors choose a family name, but you can use any name that is meaningful to you.

**5. Make your gift to the Community Foundation.** While your gifts to establish a fund will be commingled with other Community Foundation assets to maximize investment returns, income and appreciation are tracked and tied to your fund, benefitting your fund for its growth and charitable grantmaking.

**6. Plan a gift through your Will.** We can help provide appropriate language to make sure your Will meets legal and tax criteria.

From here on, your charitable vision is nearly worry-free. The Community Foundation takes care of government filings, grant paperwork, auditing and accounting. Most importantly, you will have joined with hundreds of other local donors who have created a personal legacy that is true philanthropy.

To get started, contact the Eastern West Virginia Community Foundation at (304) 264-0353 or via email at [info@EWVCF.org](mailto:info@EWVCF.org) or Hampshire County Community Foundation at (304) 822-7200 or via email at [info@HampshireCCF.org](mailto:info@HampshireCCF.org), or Hardy County Community Foundation at (304) 538-3431 or via email at [info@HardyCCF.org](mailto:info@HardyCCF.org)

# 405 GIFTS TO THE COMMUNITY FOUNDATION

Thanks to more than 400 donors (405 to be exact) combined with excellent market returns (8.1% is slightly above our peers), we were able to build our endowment and assets under management to more than \$20 million by the end of 2016. Considering that we were only in our 22nd year, this is truly exceptional growth and we would like to thank all of our donors for making this dream a reality. We are here to serve the Eastern Panhandle counties of Jefferson, Berkeley, Morgan, Hampshire and Hardy. Our small but dedicated staff is happy to help donors establish funds, leave a legacy or support favorite charities. Please feel free to contact us with your questions or comments at any time.

## Over \$10,000

BB&T Wealth Management  
Bowles Rice  
Craftworks at Cool Spring  
Eastern Panhandle CARE Clinic  
Estate of Virginia Lee Gibbons  
Patrick and Leigh Fleming  
Jefferson County 4-H Foundation  
Larry and Cindy Johnson  
Macy's  
D. Scott and Linda Roach  
Charles and Trudy Seitza  
South Jefferson Ruritan Club  
United Way of the  
Eastern Panhandle  
Bill and Nancy White

## Up to \$10,000

Dennis D. Barron  
Paul and Pamela Gavin  
Virginia Gibbons  
John League  
Robert B. Ludwig  
Bob and Tia McMillan  
John and JoAnn Overington  
Ellen Parsons  
Ruth Pritchard  
Doug Roach  
Steve and Tina Roach  
Andrew and Emily Serazin  
Robert Tissue  
Paul and Lisa Welch  
Michael and Susan Whalton  
Henry K. Willard II

## Up to \$5,000

Berkeley County Historical  
Society  
CNB Bank, Inc.  
Henry Davenport III  
First United Bank & Trust  
Paul and Elaine Guttman  
Charles and Debra Hockensmith  
Ormond and Karen Hyers  
Jefferson Distributing Co.  
Herb and Betty Kreinik  
Andrew and Kakie McMillan  
John W. Newby  
Northern Eagle, Inc.  
Don and Deborah Patthoff  
David T. Seibert  
Larry and Pam Thornton  
Darlene Truman  
United Bank  
David and Teresa Waugerman  
WGAM, Inc.

## Up to \$2,500

John Allen  
Bank of Romney  
BCT-Bank of Charles Town  
Linda Case  
City National Bank  
Stanley and Sarah Corwin-Roach  
Erdem and Joan Ergin  
Lawrence and Clare Foley  
C. Leslie Golliday III  
HCP Holdings LLC  
Chip and Karen Hensell  
George Karos  
Floyd and Mike Kursey  
John P. Lantz  
Emily Cooper and James Lee  
David and Amy Pancake  
Hazel Parsons  
Roman's Body Shop  
Malinda Shaver  
Summit Community Bank  
Robert and Mary Taylor  
Valley Health  
Larry Workman

## Up to \$1,000

Arnett Carbis Toothman, PLLC  
Baker Ruritan Club  
Denny Barron  
Beckley Area Foundation  
Ron and Kathy Bennett  
Bickers Consulting Group, LLC  
Timothy and Mary Alice Bowers  
Dannie Wall and  
Wayne Braunstein  
Rod DuChemin and Beth Brent  
Alan and Ginger Brill

Craig and Taffnie Bronzert  
Paula Jacobs and Michael Brooks  
Walter and Mary Jo Brown  
Martin Burke  
Carroll D. Butler  
Capon Valley Bank  
Catholic Daughters of the  
Americas Court # 392  
David Crosby  
Ford and Jane Davis  
Nathan Dehnke

Walter and Mary Duke  
East Hardy High School  
Elmore Funeral Home  
Exhausted Roosters  
FirstEnergy Foundation  
William and Donna Fisher  
FNB Bank  
Foltz Litter Inc.  
Friends of Norwalk Foundation  
Fulton L. Walker, Jr.

Scholarship Fund  
Gateway Garden Club  
Garry and Hannah Geffert  
Grant County Bank  
Hawse Shop n Save  
Morris and Beverly Hosby  
Mark and Rhonda Hull  
Jefferson County Historic  
Landmarks Commission  
Kiwanis Club of Shepherdstown  
Charles and Suzzan Maddy  
Main Street Martinsburg  
Richard and Dorothea Malsbary  
Howard J. Mann  
Craig Martin

Charles E. Mason  
Judi McIntyre  
Neil and Susan McLaughlin  
Sam Mills  
Harold and Jean Monahan  
Moorefield Lions Club  
Patrick and Beverly Murphy  
Norwalk Antique Car Club  
Mitch and Pam Orndorff  
Robert Owens  
Mark and Sue Ann Palmer  
Joe and Robin Pancake  
Shirley A. Parsons  
Pendleton Community Bank  
Piece Makers Quilt Guild  
Eric and Cynthia Pierson  
David Pill  
Rick and Donna Pill  
Andrew and April Porterfield  
Progressive Printing & Graphics  
Kurt and Mary Jean Pronske  
Lacy Rice, Jr.  
ROCS Local Market and  
Roach Energy  
Rick and Stacie Rohn  
Rotary Club of Romney  
Tom and Ruth Rowan  
E. Daniel and Virginia Rowzie  
S.J. Morse Company  
Sheetz, Inc  
Terry and Sharon Shippe  
John and Susan Skinner, Jr.  
Peter F. Smith  
Richard D. Stephens

William and Bonnie Stubblefield  
Joe and Becky Szabo  
The Hedges Company  
Thorne & Keplinger, Inc  
Patrick and Nena Tierney  
UCT Martinsburg Council  
Richard Wachtel  
Walker Properties  
Bill and Janis Wertman  
Steve and Lucy West  
Dean and Shirlene Young

## Up to \$250

Dora D. Adams  
Willard and Donna Aikens  
Linda Alabaugh  
Doug and Carol Allemong  
Jennifer Allen  
Anonymous  
Assn for Community  
Affiliated Plans  
Tom & Patty Austin  
Baker Insurance Services  
Cynthia Barber  
Ann Baronner  
Anne R. Basham  
Tim Bereuter and  
Susanne Bathgate  
Oscar and Dixie Bean  
William Bean  
Todd and Barbara Beckwith  
Bob and Rayetta Beitzel  
Betty Veney and Ronald Bell  
Bendy and Charlotte Bendell  
Cletus and Patricia Benner  
Berkeley County Assoc. of Retired  
School Employees  
William and Victoria Bonifant  
Suzanne Boslau  
Naomi Lee Botic  
Jerry P. Bowers  
John and Charlotte Bowman  
Ruth Bradley  
Gary and Candice Breeden  
Roy and Iva Breeden  
Joseph and Susan Brookreson  
John and Linda Browning  
Dale A. Buck  
James and Frances Bullett  
Thomas and Nancy Burke  
Bruce and Susan Butler  
Gregory and Jennifer Butler  
C & A Estate  
Caperton Furniture Works  
Ethel Carter  
Juantia Carter  
Michael Caryl  
Wendell and Janice Christopher  
City of Romney  
Dick and Gail Clarke  
Larry and Donna Clifton  
Jane Clipp  
Betsy Coffey  
Kenneth Collinson  
Colvin For Judge 2016  
Committee to Elect Bridget Cohee  
Committee to Elect  
Hassan Rasheed  
Thomas and Chad Conant  
William and Ann Cook



Ellen Cooke  
 Allen and Elaine Corfman  
 County United Way  
 Philip and Frances Cox  
 Sylvia Crawford  
 Terry and Mara Crisp  
 Jeannie Cross  
 Peggy Cross  
 Jacqueline Dailey  
 James and Diane Dailey  
 Paul Daugherty  
 David and Sandra Dettner  
 Thomas Dickerson  
 Harlan and Elizabeth Diggs  
 Roxanne Donaldson  
 Sean and Emily Duggan  
 Eastern Building Supply  
 Echo Falls C.E.O.S.  
 Sherry Fultz Noren Elliott  
 Cathy Elza  
 Mr. and Mrs. Paul Embrey  
 Dale Everhart  
 Joseph and Marcia Fisher  
 Charles and Linda Foreman  
 Billie Frame  
 Joe and Mari Freno  
 Doug and Pearl Frye  
 David and Betty Jean Fulk  
 Shawn and Felicia Fuller  
 Gary and Pam Gearhart  
 Giffin Funeral Home  
 Girl Scouts Council of the Nations  
 Capital  
 Golden Rule Chapter  
 No. 69 O.E.S.  
 Robert Goldschmidt  
 Dixie Good  
 Claudette Graham  
 Grant County Mulch, Inc.  
 Norma Grant  
 Steve and Nora Sue Green  
 Bill and Julie Gregg  
 Barbara Gregory  
 Mannie and Doris Griffith  
 Edward Grimes, Jr.  
 Edward Grossman  
 Alton and Katherine Grove  
 Shirley Grove  
 Jacob and Carol Gruver  
 Hardy County Convention &  
 Visitors Bureau  
 Hardy Telecommunications  
 Harris Community Care, Inc.  
 John M. Hawk  
 Roy and Carol Hawken  
 Lisa Hendrick  
 Casandra Henry  
 D. Frank and Ann Hill  
 Wayne and Ruth Hill  
 David and Elise Hopkins  
 Robert and Joyce Horn  
 Hornby Publishing  
 Jerry and Susanne Horner  
 John and Barb Howell  
 Mitch and Shirley Jacques  
 Chris and Sherri Janelle  
 Paula Janes  
 Gary and Sondra Jarrell  
 Juante Gebape Inc.  
 Mr. and Ms. John Kafton

Henry and Amy Kayes  
 Keaton, Frazer & Milleson, PLLC  
 Gregory E. Kennedy  
 Wanda Kines  
 Michael King  
 Gary and Frances Kisamore  
 Cindy Knoll  
 James and Susanne Koenig  
 Charles and Jill Kursey  
 Jerry and Phyllis Kushner  
 Susan Landis  
 Laryngectomee Club of  
 Montgomery County  
 Law Offices of R. Steven Redding  
 Fred and Mitzi Kiser Law  
 Peter Layde  
 Adam and Diane Link  
 Long & Foster Fairfax Centre  
 Michael and Maria Lorensen  
 Ralph A. Lorenzetti, Jr.  
 Lost River Educational Foundation  
 Randall and Susan Lovell  
 Betty S. Lowe  
 John and Judith Lucas  
 W. Scott and Blythe Lundstrom  
 James and Christine Mackie  
 NellieRay Mackie  
 John and Marilyn Mangels

Jennifer Nisenoff  
 Gwen Noll  
 Janet Olcott  
 Margaret Olcott  
 Ellen L. Ott  
 Don and Amy Owen  
 Ann S. Pancake  
 Emily Pancake  
 Marvin and Theresa Parker  
 Dennis Parsons CPA  
 Santa T. Parsons  
 Barbara Peyton  
 David and Judy Pierson  
 Christine Pill  
 Buzz and Lisa Poland  
 William and Sharon Powell  
 Robin Prinz  
 Becky Pyne  
 Ed and Barbara Quinn Quinn  
 Kenneth and Peggy Jo Rager  
 Allan and Bonnie Ramsay  
 Barbara Ratcliff  
 Cheryl Reed  
 Sally Cushwa Reid  
 Bonnie Reinfried  
 Lois Rhodes  
 Michael and Diane Rice  
 Glenn and Mary Rickard

Eileen Smith  
 Brad and Erin Sponaugle  
 St. Agnes Catholic Church  
 St. Paul's Episcopal Church  
 Jim and Mary Staley  
 Sarah Starks  
 Dan and Joan Starliper  
 Drue Steerman  
 Buddy and Janet Stephens  
 Bryan and Jessica Steward  
 Marie Strasburg  
 Patricia Stroop  
 Perry and Brenda Stubbs  
 Sunset Restaurant  
 Susan K. Paugh Attorney At Law,  
 PLLC  
 William Sweeney  
 John and Carolyn Taylor  
 Henry and Rose Thomas  
 Larry and Carolyn Togans  
 James and Shirley Tolbert  
 Michael and Mocha Tolbert  
 Bernard and Lana Tonalli  
 Town of Moorefield  
 Robin Truax  
 Gregory and Sally Unger  
 Rolf and Nancy Valtin  
 Elmer and Virginia Vance  
 Jeff and Pam Vinson  
 Beth Wagner  
 Terry and Margaret Walker  
 Wardensville Lions Club  
 Dean and Nancy Warrenfeltz  
 Emily Waters  
 Warren and Mary Watts  
 Lee and Cindy Weaver  
 Weimer Ford Inc.  
 Nancy J. Weller  
 Jane West  
 T. Edwin Wheelless  
 Dale and Helen Whetzel  
 Douglas Widmeyer  
 Jan and Rick Wilkins  
 Yvonne Williams  
 Woman's Club Harpers Ferry  
 District  
 WV Oil Marketers &  
 Grocers Assn., Inc.  
 Patty Wygal  
 Xi Gamma Zeta  
 William and Jane Yearout  
 Walter Brown  
 Yvonne Williams

*"Earn as much as you can, save as  
 much as you can, invest as much as  
 you can, give as much as you can."*

**- John Wesley**

Mr. and Mrs. David Marchette  
 Martin Luther King Scholarship  
 Committee  
 Jennifer Martin  
 Martinsburg High School  
 Class of 1949  
 Mathias Ruritan Club  
 Elaine Mauck  
 Judith Mawhinney  
 Merrill and Tammy May  
 Warren McCrory  
 Matthew McKinney  
 Juliia McMillan-Jones  
 Sheila Melzac  
 Patricia Merchant  
 Vincent and Jo Mileo  
 C. David and Barbara Miller  
 James W. Miller  
 Kurt Miller  
 Matthew and Carolyn Miller  
 Thomas W. Miller  
 William J. and Vickie Jo Milleson  
 Raymond T. Moreland, Jr.  
 Mountaineer Veterinarians  
 Milly Mullins  
 Roger and Jean Murphy  
 Brenda Murray  
 Bree Myers  
 Heather Dern Myers  
 John and Rhonda Myers  
 Kenneth and Pamela Neely  
 Ronnie Nichols

James and Nancy Rickard  
 Frederic and Wanda Riggle  
 Jane Rissler  
 Brett and Linda Roach  
 Paul and Marjorie Roach  
 Polly Roach  
 Lee Robertson  
 Ramona Robinson  
 Philip and Carolyn Ropp  
 Robert Wolford and Julie Rowan-  
 Wolford  
 Steven and Maria Rudolph  
 Richard Ruest  
 Dean & Betty Russell  
 Robert and Martha Safford  
 Marilyn Schoon  
 James Scott  
 Michael Secrist  
 James Seibert  
 Ivan and Betty Severson  
 Catherine Shepherd  
 R. Michael Shepp  
 Dean and Patsy Shewbridge  
 Beatrice A. Shipley  
 Paul and Janine Shuyler  
 Gray Silver, III  
 D.A. Shingleton and J.L. Sine  
 Sions Equipment Co., Inc.  
 Michele Slocum  
 Ron and Jean Slonaker  
 Phyllis Gail Slusher  
 Dan Smith





### Gifts were made in memory of:

Arch Gleason  
Arthur Shipe  
Barbara Pancake  
Dave Hamill  
David "Hawk" Hawkens  
Desiree' Shields  
Don Roach  
Dorothy Vining  
Eleanor Ann Shirley  
Erin Michele Pancake  
Hank Sweeney  
Helen McCarty Arvin  
James Hockenberry  
Joan Roach  
Katherine Avey Markoulis  
Kenneth Shipley  
Kim Caton Williams  
Laura Beth Horner Shantz  
Nancy Hockensmith  
Phil Seibert  
R. L. Johnson, Jr.  
Richard Lawrence Bell  
Robert B. Seem, Sr.  
Robert Craig "Bobby" Lewis  
Sarah Duff Steptoe  
Stefani Pierson  
Tom Seely  
Valerie Wilbur  
Virginia Lee Gibbons  
Wendell Seibert

### Gifts were made in honor of:

Alan Brill  
Ann Pancake  
Ashley Pill  
Bill & Nancy White's Daughters  
Bob and Tia McMillan  
Brian Hott  
Catherine Pancake  
Charles Maddy  
Charlie Parsons  
Charlotte Ann Macdonald  
Dave Pill  
George Karos  
Jimmy Pancake  
Katie Pill  
Laura Pancake  
Lucy Grimes  
Michael and Susan Whalton  
Mike Pancake  
Nancy Valtin's 90th Birthday  
Pill Family  
Rick and Donna Pill  
Ruby Amores  
Ruth Rowan  
Sam Pancake  
Thelma Pill



*Four of our Past Presidents – Stew Borger, Tia McMillan, Doug Roach, and Diane Dailey – joined together to celebrate the 20th anniversary of the Community Foundation in 2015. We are most grateful to these four outstanding individuals for their leadership, guidance, and unselfish contribution of time, talent, and treasure.*

## 44 EMERITUS LEADERS

Special thanks to the members of our Emeritus Leadership Council; men and women who previously served on the board or as technical advisors of the Community Foundation.

Tia McMillan  
Jeff Boehm  
Walter Brown  
Diane Dailey  
Betsy Coffey  
Heather Hovermale  
Taylor Perry  
Diane Melby  
Doug Roach  
Betty Russell  
Stew Borger  
RB Seem  
Glen Stotler  
Robert Strauch  
Henry Kayes  
Keith Berkeley  
Gary Fleming  
Gat Caperton  
Mary Clare Eros  
Jack Huyett  
Roger Perry  
Phil Keesecker

Joanna Abbruzzese  
Jeff Arndt  
Neil McLaughlin  
Otho Lewis  
Lacy Rice Jr.  
John Skinner  
Terry Hess  
Louise Spring  
Joan Ergin  
Rob Hoxton, IV  
Dr. Jim Keel  
James Nichols  
Sylvia Sanders  
Larry Thornton  
Phil Cox  
George Alwin  
Rod Frye  
Terry Walker  
John Beatty  
Stephen Grove  
Robert Hersey  
B. Lee Snyder

# HOW

DOES THE COMMUNITY  
FOUNDATION *WORK*



IT STARTS WITH  
**DONORS**



INDIVIDUALS



CORPORATIONS



PRIVATE  
FOUNDATIONS



NONPROFIT  
ORGANIZATIONS

WITH A  
**PASSION**



ARTS



EDUCATION



ENVIRONMENT



COMMUNITY  
WELLNESS



FAITH

WHO USE THEIR  
**GIFTS**



CASH  
SECURITIES  
REAL ASSETS  
RETIREMENT FUNDS  
INSURANCE  
BEQUESTS

TO  
**CREATE**  
ENDOWED FUNDS



**DISTRIBUTIONS**  
FROM THE ENDOWMENTS FULFILL THEIR  
CHARITABLE PASSIONS THROUGH



SCHOLARSHIPS FOR  
STUDENTS



GRANTS TO CHARITABLE  
ORGANIZATIONS

**ALL  
ENDOWED  
FUNDS:**

UNRESTRICTED  
DONOR ADVISED  
DONOR DESIGNATED  
AGENCY  
SCHOLARSHIP  
FIELD OF INTEREST

ARE GOVERNED BY  
AN AGREEMENT BETWEEN  
COMMUNITY  
FOUNDATION  
AND THE DONOR

**THE COMMUNITY FOUNDATION  
TEAM** →

MEETS WITH DONORS TO DETERMINE WHICH  
TYPE OF FUND IS RIGHT FOR THEIR GOALS  
ASSISTS DONORS WITH GIVING COMPLEX GIFTS  
HELPS DONORS GROW FUNDS

PROVIDES ANNUAL STATEMENTS  
ON FUND ACTIVITY  
OFFERS EXPERTISE ON COMMUNITY NEEDS  
PRESERVES DONOR WISHES IN PERPETUITY

**Hampshire County Community Foundation**  
PO Box 40  
Romney, WV 26757  
304-822-7200  
[www.hampshireccf.org](http://www.hampshireccf.org)

**Eastern West Virginia Community Foundation**  
229 E. Martin Street, Suite 4  
Martinsburg, WV 25401  
304-264-0353  
[www.ewvcf.org](http://www.ewvcf.org)

**Hardy County Community Foundation**  
PO Box 1058  
Moorefield, WV 26836  
304-538-3431  
[www.hardycountycf.org](http://www.hardycountycf.org)