

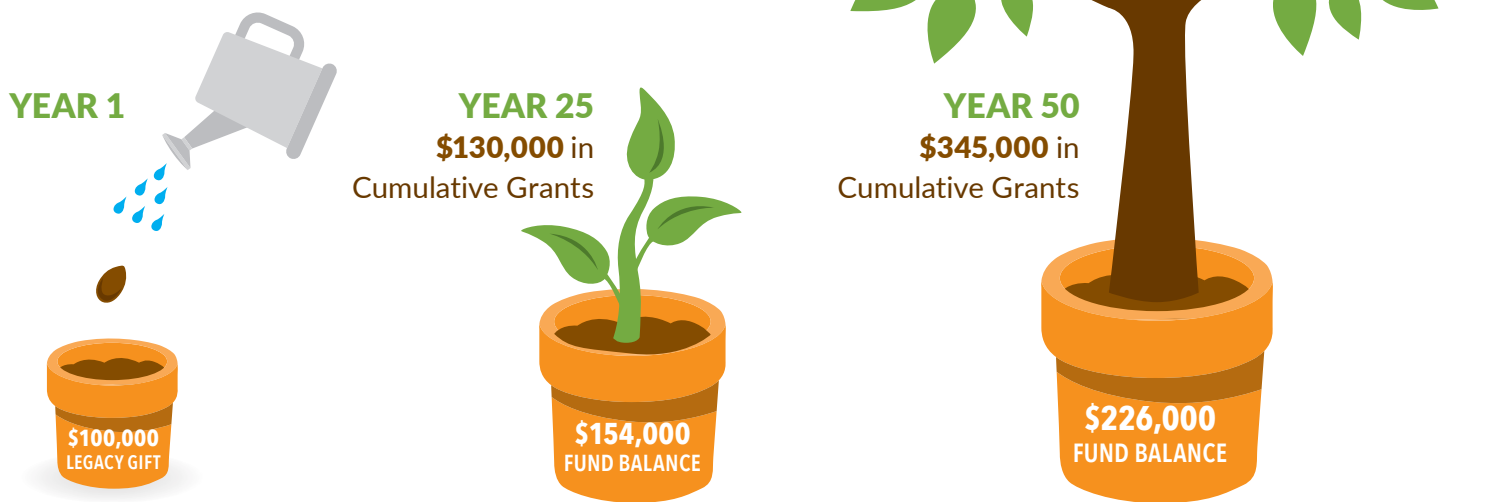
LEGACY SOCIETY

GIFTS THAT TOUCH LIVES, *forever.*

**EASTERN WEST VIRGINIA
COMMUNITY FOUNDATION**
Gather. Grow. Grant.



Legacy Society Gifts create an everlasting source of grants and scholarships for your favorite causes and charities.



**Assumes 4.5% annual distribution and 7% rate of return net of fees.*

The Eastern West Virginia Community Foundation and its affiliates, the Hampshire County Community Foundation, and Hardy County Community Foundation work together to build everlasting endowment. With local leadership in each county, meeting local needs, and making local changes to benefit our towns, countryside and communities we can fulfill our vision to uplift the quality of life in Eastern West Virginia.

The Legacy Society is a distinguished and specially recognized list of donors who have named the Community Foundation in their will or another form of planned gift. Members make their charitable dreams a reality by creating a new or adding to an existing fund within the Community Foundation. They do this through bequests, charitable trusts, estate planning, life insurance policies, or other forms of carefully planned gifts. Together with area donors, we have been facilitating legacy gifts since 1995. To date, more than 70 donors have shared their plans to leave a lasting legacy of giving in our community.

Your legacy gift has the power to do good works, *forever.*

GIVE TO THE FUTURE.

You are part of this community's past and present. By leaving a legacy gift with your Community Foundation, you can invest in your community's future.

Why do people leave a legacy gift?

Planned gifts are an extraordinary way to leave a lasting legacy. For many, this includes preserving the family name, honoring loved ones, minimizing tax burdens and supporting the community they call home. A legacy gift allows you to strategically accomplish both financial and charitable objectives.

Who can make a legacy gift?

Anyone. People can give assets including: IRAs, securities, real estate, life insurance benefits, and cash; many times by simply designating the Community Foundation as a beneficiary on their assets beneficiary form.

What good work can I do with my legacy gift?

You can support the arts, enrich education, protect the environment, provide human services, safeguard health, foster a stronger community, and more. Tell us what is important to you. You can support multiple favorite causes FOREVER...providing a stream of income that these worthy causes can count on year, after year, after year.

Where can I do the most good?

We make it a priority to be knowledgeable about local needs and charities in the community. Depending on what you want to accomplish, we can help craft a plan that supports the multiple causes you care about most.

When should I include a gift in my estate plan?

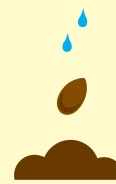
Now. You can include a gift by simply naming the Community Foundation as beneficiary on any of your assets. In addition, anytime you are drafting or changing your will or estate plan, you may want to consider charitable legacy gifts. Your professional advisor can provide guidance related to your specific estate, beneficiaries, income goals, taxes, and other considerations.

How do I plan an estate gift?

We encourage you to include your attorney, estate planner, and financial advisor in the discussion as you develop your gift plans, as well as leaders from your Community Foundation. We provide confidential philanthropic services to prospective donors and their professional advisors, without pressure or obligation. It's the best way to make certain your charitable vision is crystal clear, ensure the tax deductibility of your gift, and build your personal legacy.



Power of Philanthropy



In 1996, Jane P. Snyder left a legacy gift to EWVCF that created an endowment fund benefitting underprivileged and underserved youth in our community.



Since 1996, the Jane P. Snyder Youth Fund has granted **MORE THAN \$462,000**



In the next 20 years, Jane Snyder's fund is projected to make cumulative grants of over **\$700,000***

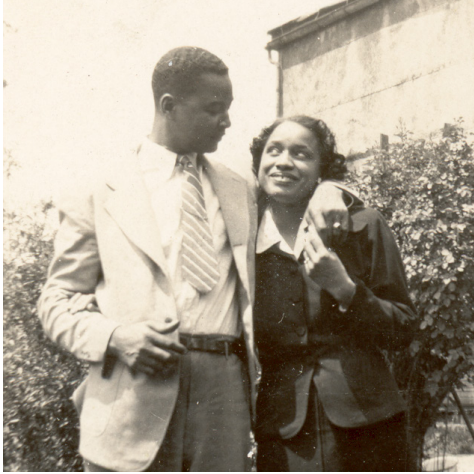


In the next 50 years, the fund is projected to make cumulative grants of **MORE THAN \$2,158,000***

Jane Snyder has left a positive, lasting legacy to her community.

* Assumes a 4.5% annual distribution and 7% rate of return net of fees.

George W. Hancock



Charter donor, George W. Hancock and Holly Woods Hancock

George Hancock expressed the grace of hometown gallantry and the wisdom of seasoned insight. It is fitting that this man— volunteer, husband, leader, teacher, executive, believer—was the charter donor of the Eastern West Virginia Community Foundation. Along his path in life, many people helped him. Equally important, he appreciated their contributions to his success and committed himself to giving back.

George Hancock was born in 1913 in South Carolina to parents who worked

as sharecroppers. When he was a child, his parents moved to New York state for better jobs. His father was swept away in a hurricane that struck a construction project in Florida when George was only 14 in 1927. Despite this loss, his mother had her eye on a college education for her youngest son, and she looked to her church's minister for ideas. Storer College in Harpers Ferry, with its commitment to African American students and roots in the Northern Baptist Association, was ideal. Mr. Hancock graduated in 1934 with a Bachelor's degree in sociology, with a double major in biology.

Despite the throes of the country's Great Depression, Mr. Hancock landed a job as secretary (a position now more aptly titled executive director) with the African-American YMCA in Rochester, New York. Gainful employment emboldened him to propose marriage to Miss Holly Woods, whom he met while in Harpers Ferry. A Martinsburg native, Miss Woods had completed a Bachelor's degree in home economics at Charleston's West Virginia State College. Mr. Hancock continued to work for the YMCA setting up programs and facilities

around the country. His new wife taught kindergarten.

They decided to retire to Holly's hometown of Martinsburg. After Mrs. Hancock's death in 1995, Mr. Hancock set up the George and Holly Woods Hancock Scholarship Fund and the George and Holly Woods Hancock Memorial-Mt. Zion United Methodist Church Fund. Mr. Hancock's love of mankind and his gifts to the Eastern West Virginia Community Foundation began a community legacy that will last for all time.



Mt. Zion United Methodist Church, Martinsburg, WV

Gretchen Wurzburg

Gretchen Wurzburg, was born in Berkeley County in 1937 and graduated from Martinsburg High School in 1955. Miss Wurzburg was a public accountant for over 45 years and a member of numerous civic groups and professional organizations. An astute business woman, Miss Wurzburg was also generous of spirit and decided to leave a legacy with the Eastern West Virginia Community Foundation.



Gretchen Wurzburg- gift of Real Estate

Within her bequest, was a gift of real estate that established three endowment funds: Wurzburg Scholarship Fund, Wurzburg/Hill Family Fund, and Wurzburg/Hill Church Fund. She named her nephew, Travis A. Hill, Jr. and his wife, Scarlett James Hill to be the advisors of the Wurzburg/Hill Family Fund. Because of Miss Wurzburg's love of dogs, Travis and Scarlett recommended spending a portion of the Wurzburg/Hill Family Fund to build the first dog park in Berkeley County. Since 2010, the Wurzburg Scholarship Fund has granted more than \$76,000 in scholarships to deserving Berkeley and Jefferson County students heading off to college. The Wurzburg/Hill Church Fund was created in memory of the family

members of Willard F. Wurzburg and Travis A. Hill. The distributions benefit four churches in Berkeley County.



Gretchen Wurzburg

THE TOP TEN REASONS DONORS GIVE TO A COMMUNITY FOUNDATION

1. We are a **local organization** with deep roots in the community.
2. We have leadership with **broad expertise** regarding community issues and needs.
3. We provide highly **personalized service** tailored to each individual's charitable and financial interest.
4. We accept a wide **variety of assets**, and can facilitate complex forms of giving.
5. We partner with **professional advisors** to create highly effective approaches to charitable giving.
6. We offer **Donor Advised Funds** to help people invest in causes they care most about, where future generations can be involved in grantmaking decisions.
7. We offer maximum **tax advantages** under state and federal law.
8. We **multiply the impact** of gift dollars by pooling them with other financial gifts and grants.
9. We build **endowment funds** that benefit the community forever and help create personal legacies.
10. We employ "**variance power**" which allows a Community Foundation to identify like causes to those originally named through gift planning, should the original need be met or eliminated over time.



BENEFITS OF JOINING

- Naming your charitable fund and having a role in determining how current and future contributions will be used.
- Sharing your personal history. We'd like to preserve your story and photographs for future generations who will receive grants from your fund.
- Having a relationship with the Community Foundation during your lifetime.
- Being invited to special events where you'll be introduced to other generous people who have named the Community Foundation in their estate plans.
- Receiving special recognition in publications, newsletters, annual reports and permanent recognition on our Legacy Society wall displayed at the Community Foundation office. We will respect the wishes of those who prefer to give anonymously.

"What mankind fears is not so much extinction, but extinction with insignificance. Man wants to know that his life has somehow counted, if not for himself, then at least in the larger scheme of things."

~Ernst Becker



229 E. Martin St., Suite 4
Martinsburg, WV 25401
304.264.0353
www.ewvcf.org



P.O. Box 1058
Moorefield, WV 26836
304.538.3431
www.hardycountycf.org



P.O. Box 40
Romney, WV 26757
304.822.7200
www.hampshireccf.org



Excellence. Accountability. Impact.™

